

# Mary Immaculate College

## IRELAND



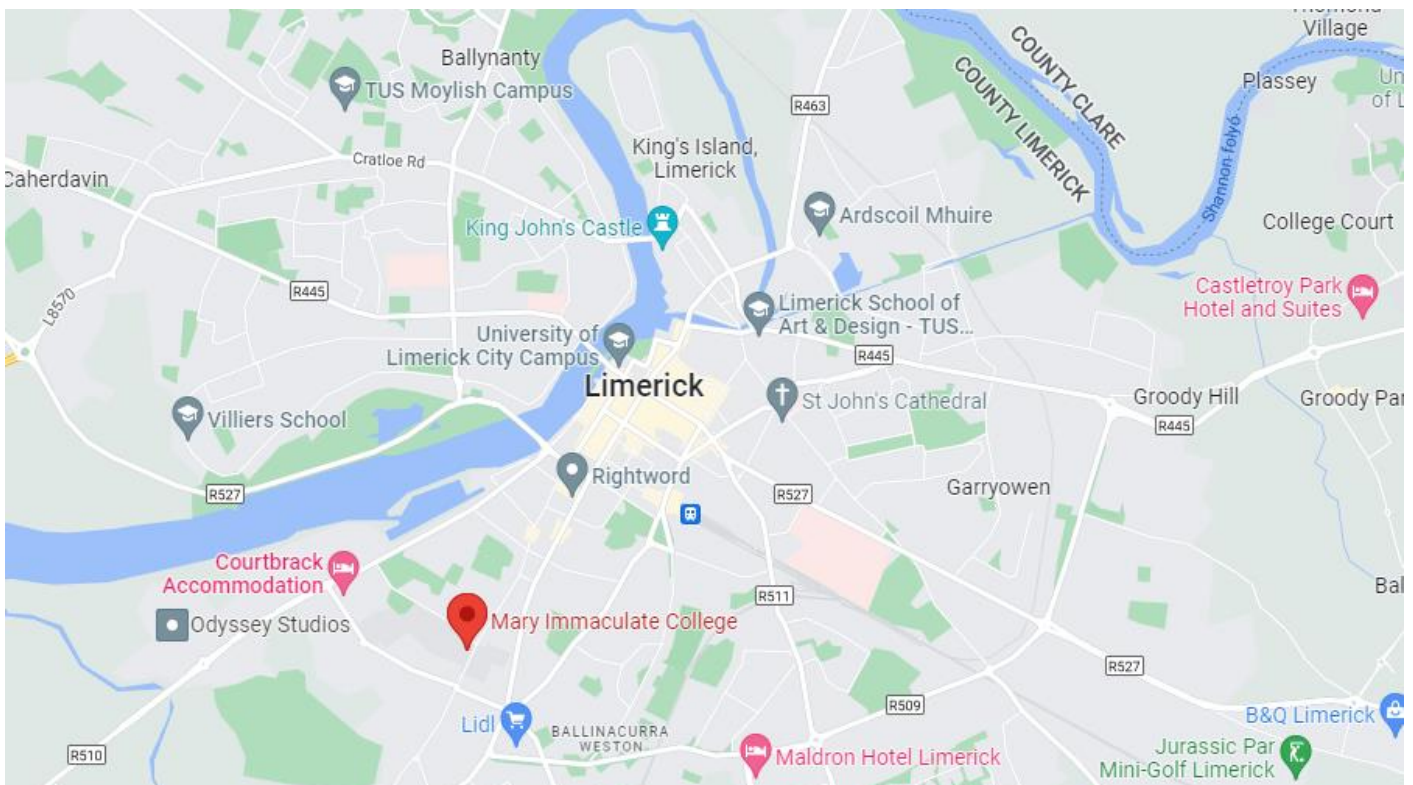
### Basic information:

Erasmus+ code: IRL LIMERIC04

Erasmus+ coordinator: [Sandra Wagner](#)

Address: South Circular Road, Limerick V94 VN26, Ireland

Official [website](#) of the university



[GOOGLE MAPS](#)

On the west coast of Ireland, the university in the city of Limerick is accepting primary, per-school and early childhood education students of ELTE TÓK.

Two students can apply annually to exchange mobility.

The semesters start in September and at the end of January; both semesters are available for application.

### **Accommodation:**

The university offers accommodation on- and off-campus, and also helps with some other private accommodation around the city. You can find information about this on the following [website](#).

### **Travel:**

You can travel directly from Budapest to Shannon Airport that connects the cities of Limerick, Galway and Cork. Here you can take the shuttle bus to the main bus station in the city centre; this takes about 30 minutes.

You can find some 'before travel' information [here](#)

**Please make sure to check the [Consular Services](#) website for information regarding travel to EU countries.**

### **Studies:**

The university's application process can be found on the following [website](#).

Course catalogues can be found on the pages below. TÓK students can choose the programmes of „Early Childhood Care & Education”, and „Education”:

[Early Childhood Care & Education Modules](#)

[Education Modules](#)

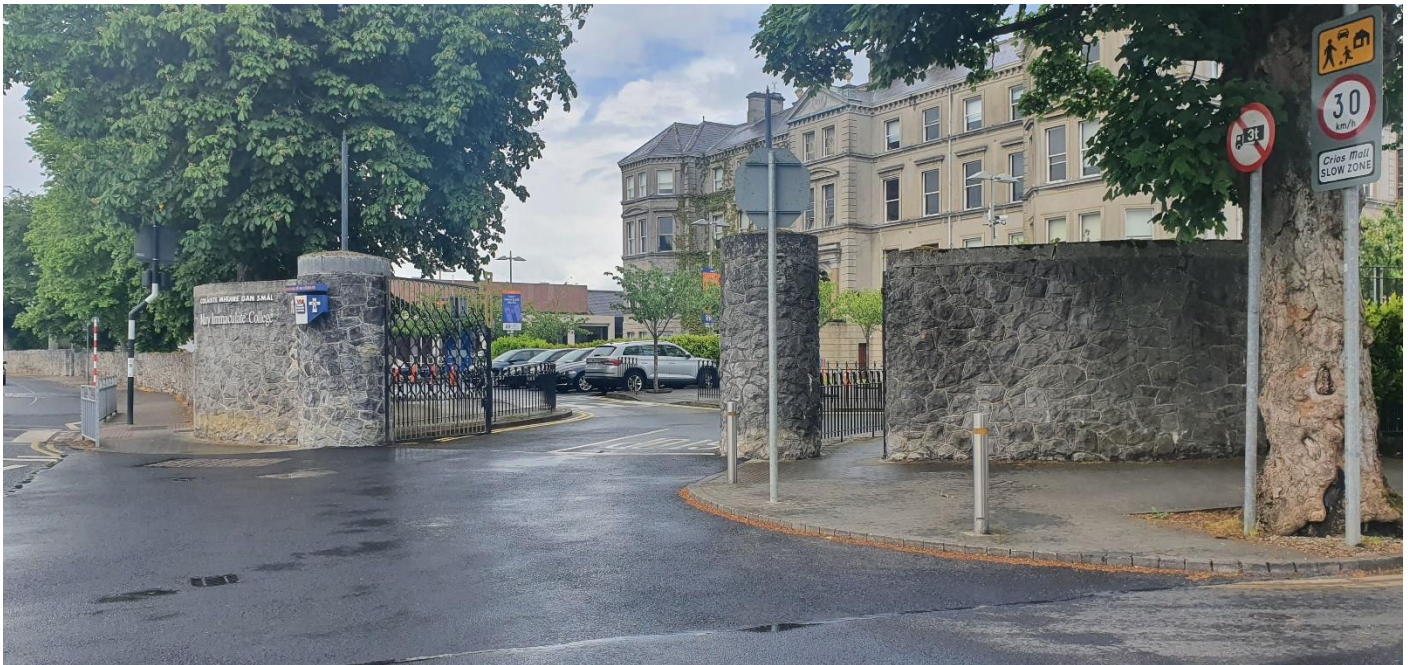
The university does not offer any opportunity to do placement.

ELTE ensures 600€ / month scholarship to each student travelling to Ireland.

### **Pictures of the university**

taken by: Ildikó Romanoczki





campus entrance



The university was a nunnery before; they still live on the grounds but do not take part in the university's work. You can see the chapel on the picture that can be used by any religion.

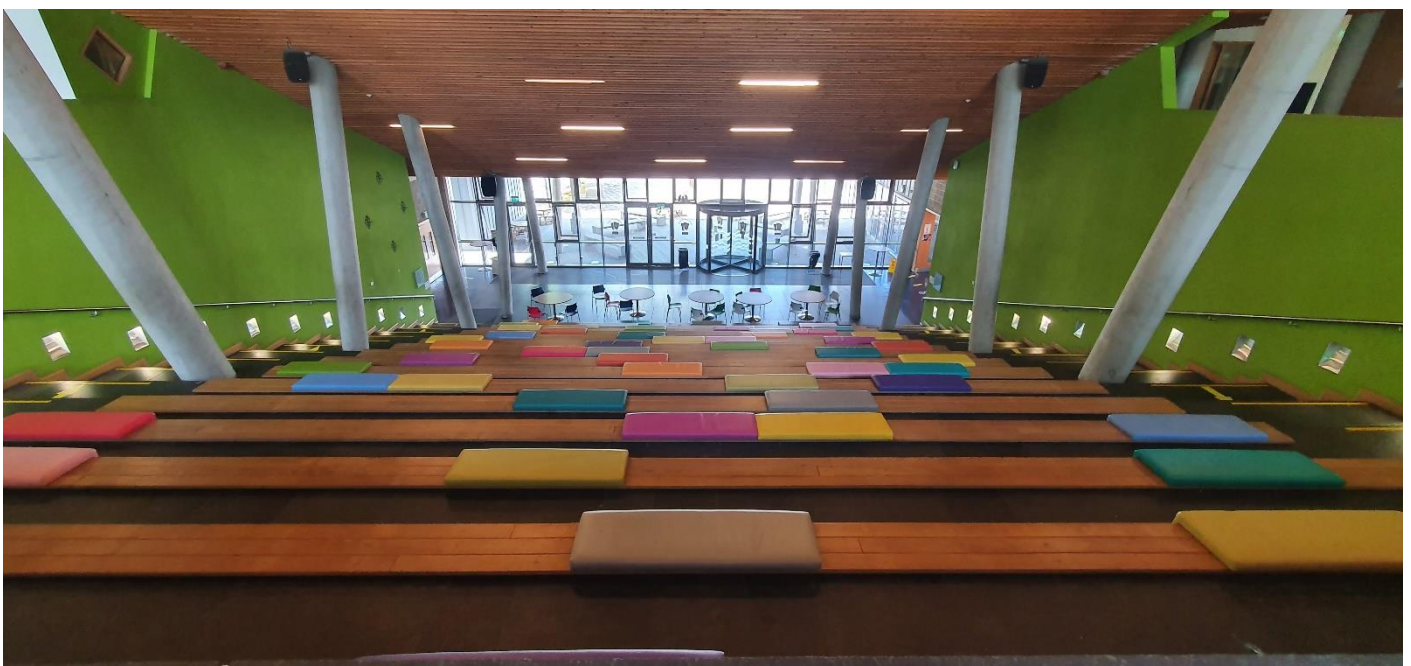




Students' Union area.



University theatre. Some courses are also held here.



The university's common place can be found under the theatre. They usually organize orientation days, charity events and any events that are connected to the Students' Union.